

ColourPyne® Fact Sheet

Practical, versatile and hard-wearing ColourPyne® is a tough, scratch-resistant surface which can be used on cupboards, shelves, pantries and cabinets, storage units, bathroom cabinetry, laundry cabinets, wardrobes, general shelving, and much more.

Substrate

ColourPyne® is available in a number of sizes and substrates.

1200 Range

Substrate	Sheet Size	Nominal Finished Thickness (mm)	
		16	18
Moisture Resistant Pyneboard®	2400 x 1200 mm	•	•
Standard Customwood®	2400 x 1200 mm	•	•
Moisture Resistant Customwood®	2400 x 1200 mm	•	•

1800 Range

Substrate	Sheet Size	Nominal Finished Thickness (mm)				
		16	18	25	32	33
Standard Pyneboard®	3600 x 1800, 2400 x 1800 mm	•	•	•		
Moisture Resistant Pyneboard®	2400 x 1800 mm	•	•	•		•
Moisture Resistant Pyneboard®	3600 x 1800 mm	•	•	•		
Standard Customwood®	2400 x 1800 mm	•	•	•	•	

Note: Some substrates, colours and or sizes are Made to Order so longer lead times and minimum order quantities may apply.

Restrictions on use

ColourPyne® should not be used in areas where it will be exposed to high moisture levels, for example, as wall linings for exteriors, for wet areas in regular contact with water, or for benchtops in kitchens and bathrooms.

Edge finishing

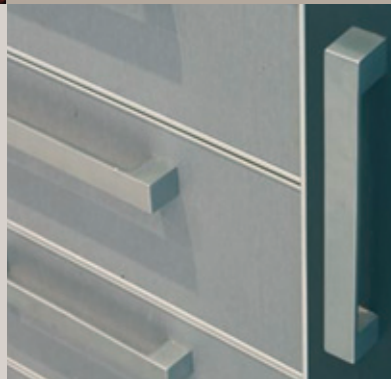
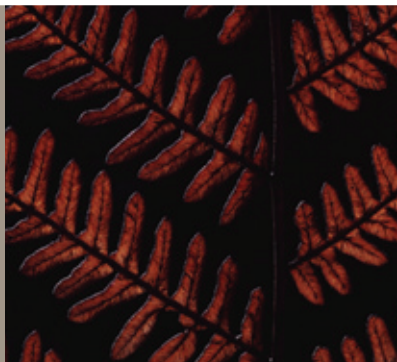
ColourPyne® board can be finished with Melamine or rigid edgetape.

Cleaning and care instructions

Keeping your ColourPyne® surfaces clean is easy. Regular cleaning simply involves wiping with a clean, damp cloth.

For spills and stains the most important thing is to catch the stain early. Wiping it with hot soapy water is the first thing to try.

Never use abrasive cleaners, wire wool scourer pads, copper cleaner pads or sandpaper on your ColourPyne® surfaces.



ColourPyne® Fact Sheet

Colour Comparison Guide

The below table indicates where the ColourPyne® range has a colour match with an equivalent product.

The below cross references are suggested matches only and offered in good faith. Final decisions regarding the acceptability of colour matches should be made by the individual.

ColourPyne® Colours Available in

	1200mm Range	1800mm Range	Available in HPL	Laminex®	Laminex® Melteca®	Hendersons Decolene	Parbury® Panelart®	Formica® Colorpanel®
Accent White	Yes	Yes	Yes	Polar White #	New Designer White # New Classic White *	Sheer White # White (Satin) *	Designer White #	Snowdrift #
Almond Fondant	Yes	No	Yes	Calico *			Natural Almond * Light Beige #	Almond *
Almond Sand	Yes	Yes	Yes	Parchment #				Gentle Beige #
Antelope Strata	Yes	Yes	Yes	Mushroom Linea *				
Anthracite	No	Yes	No			Anthracite #		Deep Anthracite **
Antique White	Yes	Yes	Yes	New Antique White *	New Cream #	Antique Cream #	Fleece #	Antique Wiluna-White #
Beech	No	Yes	No			Bonde Beech **		Golden Beech **
Black	Yes	Yes	Yes	Black #	New Black #	Black Stipple *	Black #	Black #
Bronx Beige	Yes	Yes	Yes	Marl Beige *	New Champagne *	Light Yellow *		Bronx Beige *
Burma Teak	No	Yes	No		Indian Teak *	Queensland Teak *		
Café Crumble	Yes	Yes	Yes	Stipple Seal #				
Charred Oak	Yes	Yes	Yes	Burnished Wood * Espresso Ligna ** Licorice Linea ** Ebony Macassar **		Milwaukee **		
Chintz	Yes	Yes	Yes	Classic Beige #	New Seashell #	Pearl **	Light Beige #	Champagne #
Cinnamon Crumble	Yes	Yes	Yes	Stipple Cocoa #				
Classic Beech	Yes	Yes	Yes	Select Beech **	Elegant Beech **	Sonova Beech **		Euro Beech **
Crossfire Maple	Yes	Yes	Yes		Golden Beech **	Sliced Maple **	Fusion Maple **	Soft Maple **
Dapple Greentea	Yes	No	Yes	Paper Bark *				
Dapple Moss	Yes	Yes	Yes	Stipple Hemp *			Dune ** Desert Zephyr **	
Folkstone	Yes	Yes	Yes	Oyster Grey #	New Dove Grey #	Florentine Grey #	Fashion Grey *	Seal Grey #
Hemp Strata	Yes	Yes	Yes	Pesto Linea *				
Jarrah	Yes	Yes	Yes	Echelon Redwood **	New Mahogany **	Jarrah **	Versailles Anigre **	Jarrah **
Lodestone	No	Yes	No	Greystone *		Riverstone *	Graphite Nebula **	Ironstone *
Macchiato	Yes	Yes	Yes	Espresso **	Bitter Chocolate **			Mocha *
Mocha Finline	Yes	Yes	Yes	Nocturne Oak * Espresso Ligna ** Wenge **	Dark Oak **	Wenge **	Concept Oak ** Wenge Arrow **	Straight Grain Wenge **
Myanmar Teak	Yes	Yes	Yes	Mocha Ash ** Nocturne Oak **		Dark Walnut **		
Natural Cherry	Yes	No	Yes				Savoy Cherry *	
Natural Oak	Yes	Yes	Yes	Milkwood **				
New Antique White	Yes	Yes	Yes	New Antique White #	New Cream *	True Antique White #	Antique White **	Antique Wiluna-White *
Pacific	Yes	No	Yes					Char Blue **
Planked Pear	Yes	Yes	Yes	Swiss Pear **	Autumn Cherry **	Cherry *		Planked Pear #
Powder Oak	Yes	No	Yes					Tasmanian Ash **
Red Cherry	Yes	Yes	Yes	Red Cherry **	Autumn Cherry **	Cherry **		Planked Pear ** Cherry **
Restful Elm	Yes	No	Yes	Silver Ash **				Refined Oak **
Sandstone	Yes	Yes	Yes	Peruvian Clay #	Oyster #	New Oyster #		Sable **
Silver Haze	Yes	Yes	Yes	Zincworks **		Brushed Aluminium **	Satin Stainless **	Brushed Silver **
Soft Lemon	No	Yes	No	Rock Maple **	Summer Birch **	Tea Tree **	Oslo Beech ** Maple Sugar **	Lemon Tree *
Storm Grey	Yes	No	Yes	Gunmetal **				Storm *
Venizia Walnut	Yes	Yes	Yes	Queensland Walnut **				Vicenza Walnut **

Exact Match or almost Indistinguishable, a colour that would be acceptable * Slight Variation due to colour or texture ** Possible Alternative

Although every effort has been made to ensure the information in this brochure complies with existing standards and codes of practice, no responsibility is accepted for any errors or omissions neither in this brochure nor for any specification or work based on this information. Specification may change without notice.

Carter Holt Harvey Wood Products Australia ABN 93 002 993 106. ColourPyne is a registered trademark of Carter Holt Harvey. Copyright 2008 Date of publication September 2008-09-23